

THURSDAY, FEBRUARY 25

WHAT IS AN OPEN HOUSE?

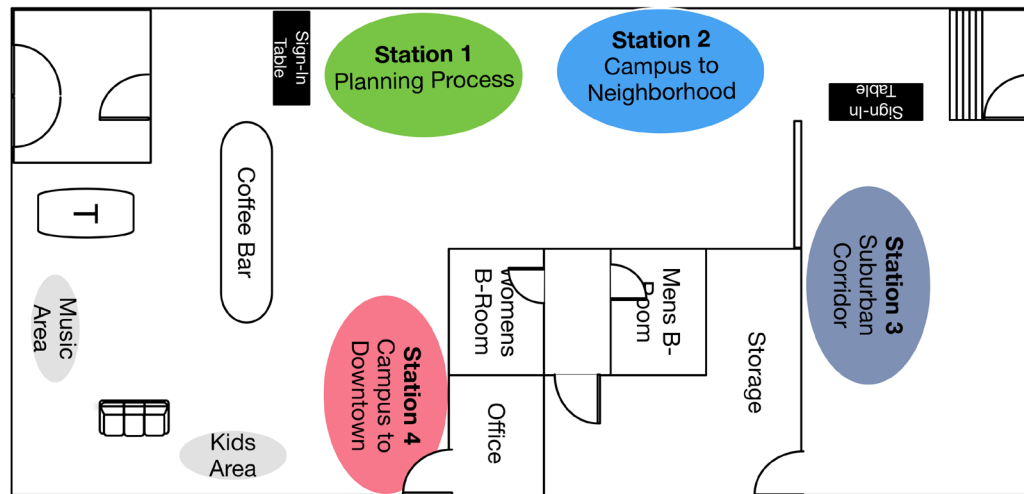
The Indiana Community University District Master Plan Open House is an informal, browsable presentation of the completed Plan. On display are maps, graphics and other content from the Plan. Everyone is encouraged to “mill around” at your own pace taking in the exhibits and interacting with the professionals involved in the project. The aim of this event is to better your understanding of the various facets, ideas and projects included in the final Plan document.

OPENING REMARKS 6:00

OPEN HOUSE 6:10

CLOSING REMARKS & 7:10

PRIZE DRAWINGS



Special thanks for door prizes:

The Student Cooperative Association

Italian Village Pizza

INDIANA COMMUNITY UNIVERSITY DISTRICT MASTER PLAN OPEN HOUSE



The Indiana Community University District Plan has been a highly-focused planning effort in the areas around the IUP campus. The project, the first of its kind in Indiana, was a joint planning initiative developed by Indiana Borough, White Township, IUP, and Indiana County. The project brought together residents, developers, students, planners, and design and community development professionals through a series of highly-interactive public design workshops in the fall of 2014 and early 2015 to “rethink” the areas around the IUP campus. The product of these sessions is a 51-page highly graphic planning document which details an action strategy that is prioritized for implementation.



@PlanIndianaCo

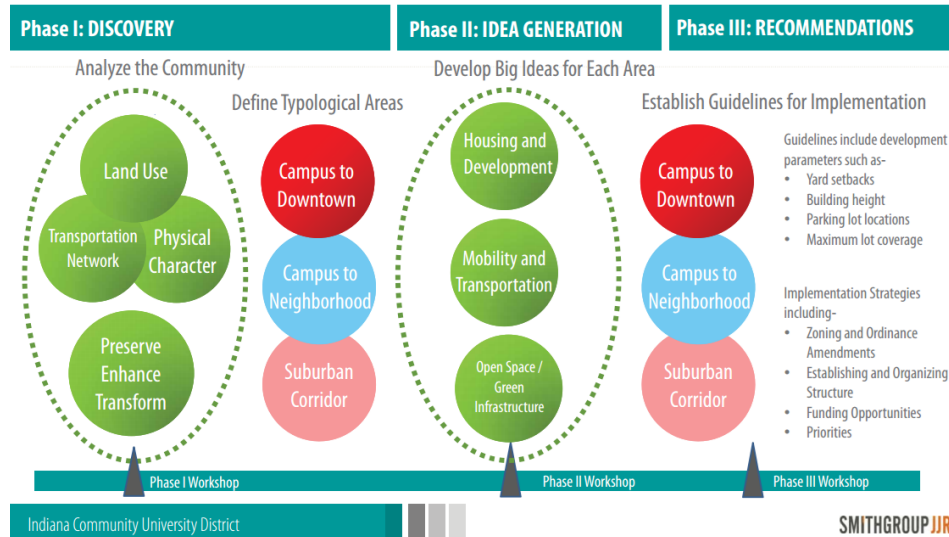
@PlanIndianaCo

Facebook.com/icopd



INDIANA COMMUNITY UNIVERSITY DISTRICT MASTER PLAN

STATION 1



Analysis of the communities lead to defining the District into three Typological Areas (areas within the study area that shared common characteristics) and gave structure to the recommendations.
Figure 1. Planning Process

STATION 2

CAMPUS TO NEIGHBORHOOD

Big Ideas

1. Improve **Oakland Ave. / 13th St. intersection** to improve level of service for all users.
2. Improve the **7th Street/Wayne Ave/Locust Street intersection** to improve level of service for all users.
3. **Stream restoration and floodplain management** for March Run and Whites Run, Confluence area

STATION 3

SUBURBAN CORRIDOR

Big Ideas

1. Implement the **transit operation and maintenance facility** (Rose St / Saltsburg Ave.)
2. Implement the **Confluence Park concept and floodplain improvements**
3. **Redevelop the vacant commercial property** at Wayne Ave. and Hospital Rd.
4. **Complete Multimodal Corridor** along Wayne Ave.

STATION 4

CAMPUS TO DOWNTOWN

Big Ideas

1. Redevelopment of **8th Street corridor**.
2. Locating a new **Transit Hub or Center** in Campus to Downtown area.
3. Creation of a bike friendly **multi-modal corridor** on Gompers Ave and/or Philadelphia St.
4. Provide new **commercial development** along 7th Street as a front door to downtown.
5. Look for opportunities to add **pocket parks and seating nodes** along Philadelphia Street and 8th Street.